

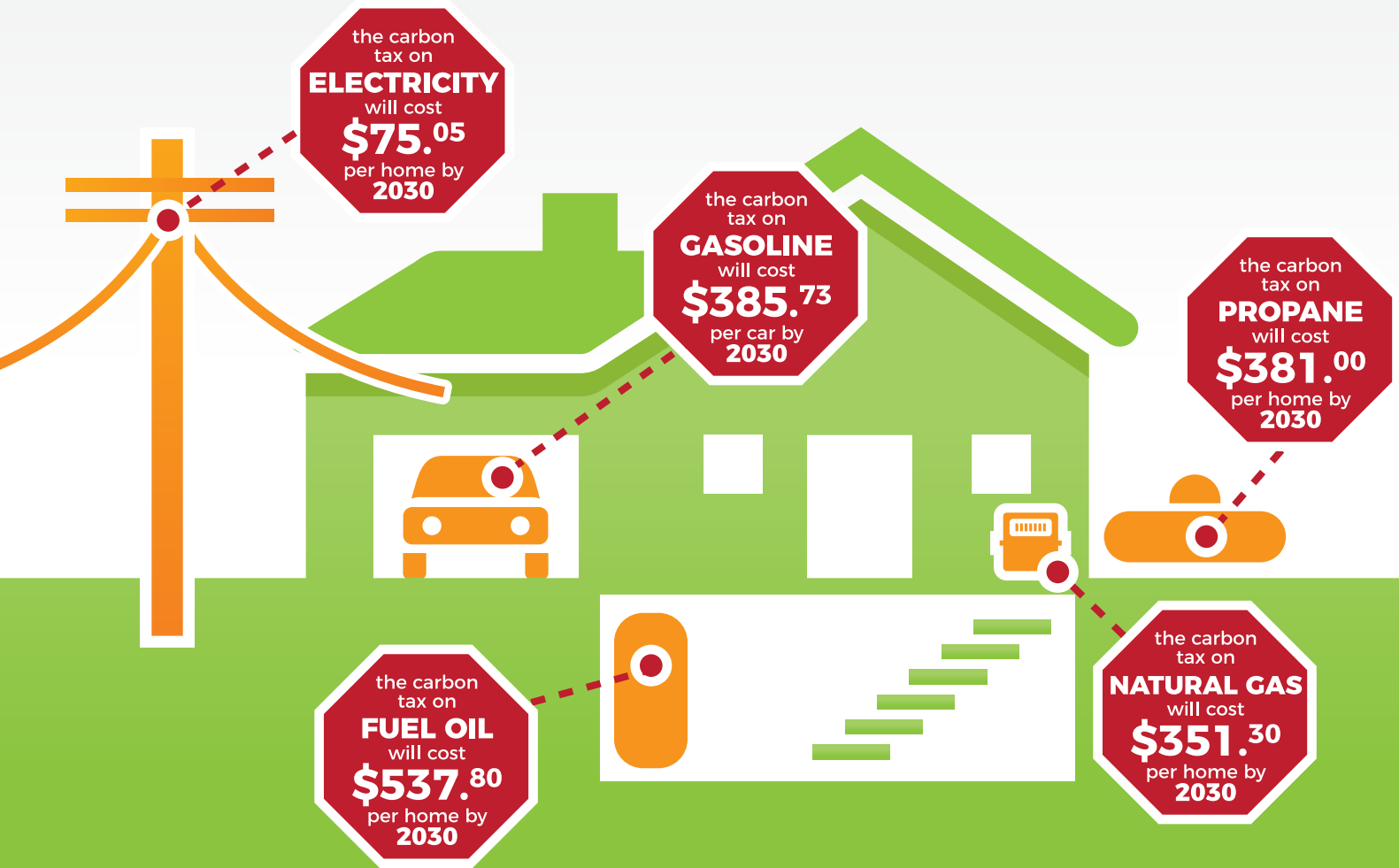


THE CARBON TAX IN



What is the Carbon Tax?

The carbon tax is a scheme to reduce carbon dioxide (CO₂) emissions by placing a “fee” — really a tax — on our state’s energy resources. But what it actually does is make Connecticut’s already high cost-of-living virtually unaffordable. If enacted, the carbon tax would be especially devastating for our state’s low-income communities, families, and small-business employees who are already struggling to make ends meet. A similar carbon tax scheme in France caused gasoline prices there to spike, sparking nationwide protests and the now international “yellow vests movement.”



What Does This Mean for the Average Family?

AFTER 10 YEARS, the carbon tax would increase your household costs by...

